

cascadeengineers.com



CASCADE ENGINEERS
INDIA

VALVES | FITTINGS | MEP

A background image of a construction site featuring a complex network of grey metal scaffolding. Several silhouettes of construction workers are visible, some standing on the scaffolding and others on the ground, working on the structure.

**Delivering pure performance
and high quality work
at economic prices since 1980**

Contents

Brands At A Glance	4
About Us	7
<u>Kranti</u>	9
Danfoss	10
<u>Delta</u>	11
<u>H. Guru</u>	12
Honeywell	13
<u>HP</u>	14
<u>IWL</u>	15
<u>Kalpex</u>	16
<u>NECO</u>	17
<u>Neer Drains</u>	18
<u>OES</u>	19
<u>Pidilite</u>	20
<u>Shekhi</u>	21
Stanley Safety	22
Supreme	23
<u>Syncro</u>	24
<u>Thermodrain</u>	25
<u>Wika</u>	26
<u>FAHM</u>	27
Trickle Drains	28



Tested by time Hardened by trust Respected by all

With more than 40 years of exposed industry experience, our experts are meant to tackle every requirement with clarity, confidence, and certainty!



Expert in MEP Hardware



Modern Product Line



Leading the Industry For Decades



- Ball Valves
- Butterfly Valves
- Gate Valves
- Check Valves
- Y Strainer Air Release Valves



- Ball Valves
- Motorised Butterfly Valves
- Water Flow Switch
- 2-way, 3-way control valves
- Actuators and thermostats



- PVC, CPVC, UPVC Solvents
- Holdtite
- Silicone Sealant
- Teflon Tape



WIKAI

- Pressure Switch
- Water Flow Switch



hp

- PVC, CPVC, UPVC Solvents
- Holdtite
- Silicon Sealant
- Teflon tape
- CPVC & UPVC Ball Valve
- FRP Chamber Cover



KalpEX™

- Hydrant valves & Accessories
- Fire Extinguishers



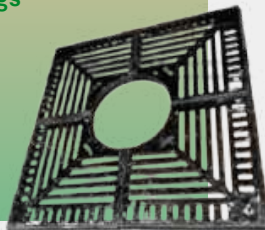
OES™

- Grooved Fittings



NECO
GROUP OF INDUSTRIES

- Manhole cover
- Gratings



THERM DRAIN®

- FRP Manhole cover
- Composite Manhole Cover
- Gratings



H. GURU

- Pressure Gauge
- Temperature Gauge



SHEKHI

- Ball Valves
- Brass Y Strainer
- Ball valve with Filter
- Spring Check valve
- Pressure Reducing Valve
- Bib Cock



IWL

- Wrapping Coating (pypkote)
- Bitumen Primer





- Gratings
- Roof Drains
- Cleanout Plugs
- Shower Channel



- Pressure Switch
- Pressure transmitter
- Flow Switch
- PIBC Valves



- Water Meter
- Electric Magnetic Flow Meter



- Helmets
- Jackets
- Shoes
- Safety Belt



- Variable Air volume
- Air Distribution Products
- Building Management Systems



- Pressure Gauge
- Temperature Gauge



Other Brands



Engineering a Comfortable Today and Sustainable Tomorrow

Welcome to **Cascade Engineers India**, your trusted partner in MEP solutions!

At **CEI**, we take pride in being a leading hardware supplier, catering to the diverse needs of businesses and individuals. With a passion for technology and a commitment to excellence, we have been serving our valued customers with top-notch products and exceptional services for over **four** decades.

We offer an extensive range of high-quality products, carefully curated to meet the demands of various industries and applications. Whether you are a small business, a large enterprise, or an individual enthusiast, we have the perfect solutions to suit your requirements

Our knowledgeable and friendly team of experts is here to assist you every step of the way. We believe in building lasting relationships with our customers, and your satisfaction is our top priority.

For any inquiries, orders, or assistance, please don't hesitate to contact our friendly team.





Vision

To be the leading and most trusted supplier, empowering businesses and individuals with cutting-edge technological solutions, exceptional product quality, and unmatched customer service.

Mission

At **CEI**, our mission is to deliver top-notch products and services to our customers, enabling their success and growth. We strive to achieve this by:

- Providing a comprehensive range of high-quality solutions to meet diverse needs and requirements.
- Building strong partnerships with top manufacturers and vendors to ensure a steady supply of innovative and reliable products.
- Delivering exceptional customer service and technical support, fostering long-lasting relationships with our clients.
- Investing in the continuous development and training of our team to stay at the forefront of technological advancements.
- Operating with integrity, transparency, and environmental responsibility to make a positive impact on our communities and the planet.
- Anticipating market trends and staying adaptable to cater to the evolving needs of our customers.

Our commitment to excellence, innovation, and customer satisfaction drives us to be the first-choice hardware supplier for businesses and individuals worldwide.

Electromagnetic Flow Meter



Display: 16x2 mm LCD

Accuracy: $\pm 0.5\%$ F

Line Size: 15 NB to 600 NB

Media: Liquid (Conductive)

Process Temperature: 70 deg C

Rubber/150 deg C PTFE

Conductivity: Greater than 5 micro s/cm

Viscosity: 200 cp max

Excitation: Pulsed DC Coil

Operating Conditions: Temperature 0 to 55 deg C / Humidity 5 to 95% on condensing

Linearity: $\pm 0.5\%$

Process Pressure: 16 kg / cm² max

Water Meter

Material: Copper Alloy

Minimum Reading: 0,0005 m³

Maximum Reading: 999999.999 m³

Maximum Pressure: MAP16

Maximum Temperature: T30 or T50 deg C

Application: Water





Pressure Switch



- Low differential switching
- Wide range of approvals
- High vibration stability
- Wide pressure ranges
- Different sensing elements
- Bellows technology
- Designed for various applications
- High reliability
- Snap action contacts

PIBC Valve

Meet AB-QM, our PICV with value for HVAC designers, building owners and building users. The valves are designed for use in combination with conventional actuators or the Danfoss NovoCon® S digital actuator. In particular, they enable HVAC solutions in smart commercial buildings concepts such as hotels or offices.



Pressure Transmitter

The compact pressure transmitter, type MBS 3000, is designed for use in almost all industrial applications, and offers a reliable pressure measurement, even under harsh environmental conditions.



Stainless Steel Pressure Gauge

SPECIAL FEATURES

- Design standard followed in general EN 837-1.
- Flanged or screwed connection
- Stainless steel case & measuring systems

Pressed Steel Pressure Gauge

SPECIAL FEATURES

- Economic Version
- General Purpose Application
- Accuracy up to $\pm 1.0\%$



Temperature Gauge

SPECIAL FEATURES

- Use of inert gas - N₂
- Suitable for sanitary application
- All SS construction
- Rigid stem or capillary type
- Fast response
- Non-polluting, environment friendly
- Non-hazardous for the service
- High reliability
- IP-65 protection
- Accuracy $\pm 1\%$ FSD



Pressure Gauge

TECHNICAL SPECIFICATIONS



Dial Sizes: 100mm, 150mm

Accuracy: (10~90% of scale): +/- 1% FSD

Sensing Element: Bourdon Tube

Casing Options: Cast Aluminum, SS 304 / SS316

Dial: Aluminum matte white finish with black lettering.

Pointer: Black finished Aluminum micro adjustable.

Window Options: Glass, Shatter proof glass, Toughened glass, Acrylic.

Weather Protections: IP 55, IP 65, IP 67

Approximate Weight: DS 100mm = 0.4 Kg, DS 150mm = 0.7 Kg

Temperature Gauge

TECHNICAL SPECIFICATIONS

Dial Size: 100 mm

Connection Size: 1/4" bsp (Bottom)

Stem length: 300 mm

Operating Temperature: -29 C ~ 150 C

Ambient Temperature: -25 C ~ 65 C

Sensing Element: Bourdon Tube

Element Materials: SS316, Monel

Pointer: Aluminum

Dial: Aluminum, Black graduation on white background

Protection class: IP55/IP65



Motorized Butterfly Valve



FEATURES

- Wide size range (DN 50...DN500) for PN16 type for On-Off Control
- Manual override non-clutch design.
- Irreversible worm gear.
- Visual mechanical position indicator for accurate visual reference of valve position.
- Anti-condensation heater and 2 aux. limit switches on standard model
- Enclosure IP67

Water Flow Switch

- **Operating Pressure:** 10kgf/cm² (1000KPa)
- **Withstand Pressure:** 17.5Kgf/cm² (91750KPa)
- **Insulation Resistance:** Over 100 ohm , DC500VM
- **Withstand Voltage:** AC1500V/1minute
- **Contact Point Life:** 1000K Cycle
- **Bellows Life:** 500K Cycle
- **Temperature of Fluid:** Max 100°C (212°F)



Thermostat

FEATURES

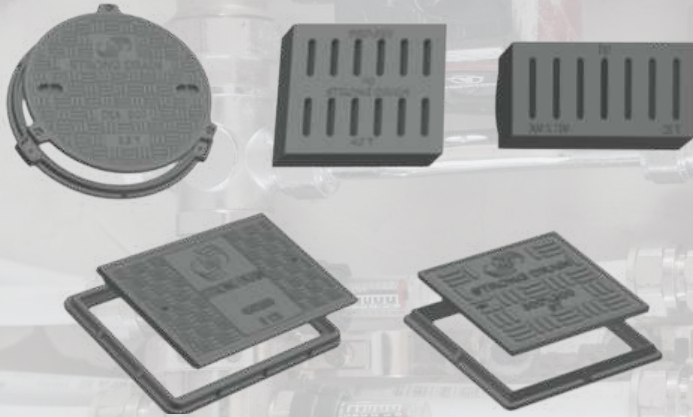
- Super modern appearance design
- Horizontal and vertical model available for variant application
- Slim design, direct installation on 86 size box
- Big LCD with English and icon display
- Easy to install and set-up
- Selectable room temperature or setpoint display
- Manual or automatic fan speed selection by button press
- Temperature unit either C or F





FRP Manhole Covers

UPVC & CPVC Ball Valves



Solvents and Sealants





Pypkote

IWL India manufactures high quality bitumen and coal tar based wrapping and coating anti corrosive tapes which conform to IS:10221. IWL's "Pypkote" tape is specially manufactured by sandwich and carrier methods and consists of polymeric mix supported by a high-tensile HMHDPE film. Pypkote tapes are specifically manufactured to have properties that resist corrosion on pipelines.

Bitumen Primer

Coldstick is solvent based rubber modified bituminous primer. It is used as a surface preparation for Waterproofing and Pipe Coating Applications. It is cold applied primer. Coldstick is supplied in 20 L Coldstick is a cold applied primer and it is applied by painting over the substrate by brush / spray. Primer is left to dry until the solvent evaporates. Please note that the primer is inflammable due to presence of solvent. Therefore care must be taken that no flame is applied on the primer before the solvent evaporates. Since the primer contains solvent, prolonged exposure especially in closed areas should be avoided.





Fire Extinguisher

KalpEX MAP 50 ABC extinguishers are effective against Class A, B and C. Mono ammonium phosphate (MAP) cuts off oxygen supply to the fire and hence extinguishes the fire.

Hydrant Valves

Hydrant valves (also called Landing valves) provide the means to draw water for firefighting from the Fire water piping network. They are normally mounted onto stand posts, fitted on the fire water network.



Manhole covers



Gratings



Why 'Ductile Iron'

'Spheroid Graphite' or 'Ductile Iron' is a unique form of Iron which prior to the metal casting process receives crucial mineral additives to produce an exceptionally strong resistance and durable metal, the molecular structure of 'Ductile Iron' gives rise to excellent additional strength and shock load resistance, within structure carbon steel, without steel inheriting corrosion.

ADVANTAGES OF 'DUCTILE IRON' MANHOLE COVERS, FRAMES & GRATINGS:

- High Strength, results in More Life and Durability
- Available with Elegant Checkers Design, offers Good Anti- skid Grip and Nice Appearance.
- Due to it's Hinge type Design, Chances of Theft are Less.
- Suitable for Heavy Traffic Loading and at High speed.
- Chances of Accidents are almost Reduced, as it Does Not Break Suddenly.
- Due to High Strength, 'Ductile Iron' Minimises the Risk of Failure during normal uses and offers Resistance to Impact.
- Ductile Iron's High Strength to Weight ratio allows the manufacturers to relatively manufacture Light Weight Castings, offering up to 50% Weight Savings over Grey Iron Castings, subsequently Saving in Cost Per Piece.
- Lightweight Castings offer Cost Benefits, from Transportation to Installation, providing Ease of Handling and Maintenance during service.



Floor Drains



- **Height** - 150 x 150 x 20 mm
- **Country of Origin** - Made in India
- **Material** - Stainless Steel
- **Size** - 150 x 150 x 100mm
- **Color** - Silver
- **Body Finish** - Matt Satin Glossy
- **Packaging Type** - Box
- **Shape** - Rectangle
- **Usage/Application** - Floor Fitting/ Bathroom/ Hotels/ Common Floor/ Hospitals

Cleanout Plugs

- **Model No** - NCO8014-8
- **Shape** - Round
- **Usage** - Floor/ Pipe Clean Out
- **Product Name** - Clean Out Thread Type
- **Country of Origin** - Made in India
- **Material** - Nickle Bronze



Shower Channel



- **Model No** - NS-CTD 600
- **Size** - 100 X 600
- **Finishing** - Polished
- **Grade** - 304
- **Country of Origin** - Made in India
- **Material** - Stainless Steel
- **Color** - Silver
- **Thickness** - 1.5 mm
- **Usage/Application** - Basement

Roof Drains

- **CI Body Outlet** - 100 mm
- **Floor Size Inlet** - 260 mm
- **Height Of CI Body** - 95 mm
- **Screw Two** - SS Screw
- **Country of Origin** - Made in India
- **Material** - CI Body With Aluminum Dome
- **Usage/Application** - Roof Fitting, Rain Water Harvesting



Grooved Fittings



RIGID COUPLING

- Angled bolt pad housing design
- provides rigidity
- Sizes from 2 – 12" | DN50 – DN300
- Pressures up to 300 psi | 5171 kPa | 52 bar

FLEXIBLE COUPLING

- Flexible pipe joint which allows for
- expansion, contraction and deflection
- Sizes from 3/4 – 24" | DN20 – DN600
- – Pressures up to 300 psi | 6895 kPa | 69 bar



THREADED OUTLET MECHANICAL TEE



GROOVED REDUCING TEE



90° ELBOW



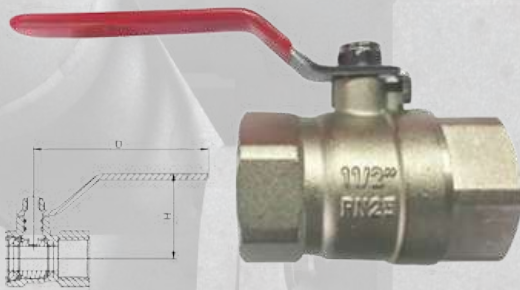
EQUAL CROSS



SOLVENTS & SEALANTS



Ball Valve



- Normal Pressure : $PN \leq 1.6\text{Mpa}$
- Working Medium : Water, Non-corrosive
- Working Temperature : $-20^{\circ}\text{C} \leq T \leq 110^{\circ}\text{C}$
- Pipe Thread to ISO228
- Also FxM MxM thread are available

Brass Y-Strainer

- Normal Pressure : $PN \leq 1.6\text{Mpa}$
- Working Medium : Water, Oil, Non-corrosive
- Working Temperature : $-20^{\circ}\text{C} \leq T \leq 150^{\circ}\text{C}$
- Pipe Thread to ISO228



Check Valve

- Normal Pressure : $PN \leq 1.6\text{Mpa}$
- Working Medium : Water, Non-corrosive
- Working Temperature : $-20^{\circ}\text{C} \leq T \leq 180^{\circ}\text{C}$
- Control Expor-pressure : 0.1 - 0.6 Mpa



Bibcock

Brass bibcock with brass ball, brass stem, and steel handle





Safety Helmet

- Material : (HDPE)
- Size: 540mm- 590mm.
- Strap made from polyester.
- Light weight yet strong to ensure extended working hours.
- Available in smart vented and unvented designs.
- Louvers for cross ventilation in Stanley Safety series.
- Cushion pad for wearer's comfort.
- Available in Pin Lock and Ratchet Design.
- Skin friendly sweat pad, chin strap and cushion pad.
- 4 point suspension / 6 point suspension.
- Manufacturing capacity : 4000 helmets per day.

Safety Shoes

- Full grain fine leather.
- Thickness : 1.8mm- 2.00mm.
- Breathable, highly flexible, extra strong for comfort and long wear ability.
- steel toe cap (rust free) – with an ability to withstand an impact of 200 J.
- Moulded PU sole with deep cleats.
- Light weight, slip resistant, resistant to types of oils / chemicals.
- Withstand maximum temperature of 100 degrees for 1 minute.
- 3 Ply / 6 Ply nylon for strong uppers at all the joints to enhance life.
- Manufacturing capacity : 1000 pairs per day.



Safety Jacket

- Made with standard comfort polyester fabric.
- Size available- S, M, L, XL, XXL.



Safety Belt

- Made from nylon.
- Strong and easy to use.
- Adjustable belts for full proof safety.



INSUflex Tubes



NBR Thermal Insulation Tubing INSUflex is a fire retardant, closed cell elastomeric nitrile foam product. The closed cell structure of the product provides high resistance to water vapour diffusion, thus maintaining its low thermal conductivity even during operation in HVAC areas. An environmental & user friendly product, is easier to install than conventional fibrous products.



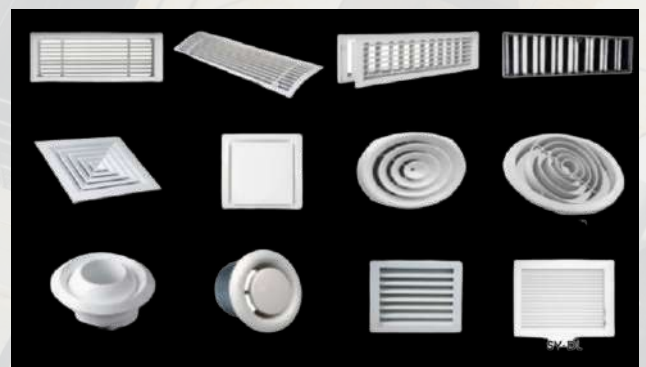
Variable Air Volume (VAV)

Syncro's Pressure Independent Variable Air Volume system (VAV) is designed to distribute conditioned air in a controlled manner to the various zones of a building through a single duct air distribution network. This is done with the highest level of precision independent of the inlet conditions in order to achieve space comfort and energy conservation at the same.



Air Distribution Products (ADP)

The components and layout of mechanical air distribution are important because they can improve both the comfort of occupied spaces and reduce energy use. Although the fans that distribute the air do not consume nearly as much energy as the equipment that generates the heating and cooling, it doesn't matter how efficient the equipment is if the air is not distributed well. Furthermore, leaky ductwork can cause 20 - 40% of heating and cooling energy loss.



Gratings

SALIENT FEATURES

- "THERMODRAIN" Gratings are with ZERO FILLER CONTENT due to which it doesn't have air voids, hence doesn't require void filling & painting / coating.
- Due to Zero filler "THERMODRAIN" Gratings perform far superior under load bearing and weathering. They do not crack under open sunlight and have higher impact resistance than FRP Gratings with filler contents. Its high flexural strength doesn't allow permanent deformation due to load.
- "THERMODRAIN" Gratings are self pigmented, non painted.
- "THERMODRAIN" Gratings are one piece molded jointless (Interwoven Construction).

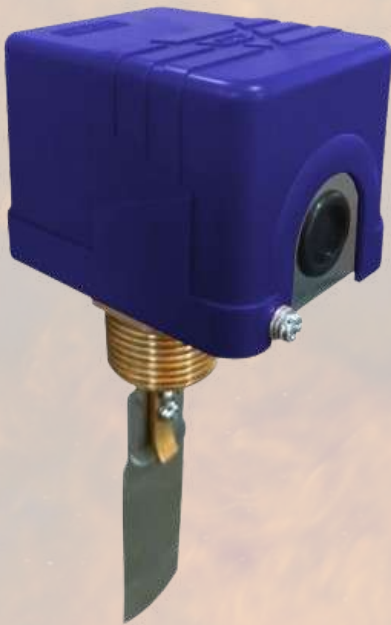


FRP / GRP / Composite Solid Top Manhole Covers

SALIENT FEATURES

- All covers are available with double seal.
- All covers can be provided with key locking or bolt locking arrangement.
- All lifting keyholes are in High Strength Plastic Alloy / Stainless Steel, socket type to avoid wear & tear in the lifting area.
- All keyholes have closed bottom (not thru & thru).
- If required the covers are made available with bolt locking arrangement.
- Permanent set is zero in all sizes & load bearing.
- Self pigmented/non painted.
- Non brittle





Water Flow Switch

SPECIAL FEATURES

- Switch point repeatability of $\pm 0.5\%$ for reliable switching
- High-quality bellows and microswitch for a service life of $> 500,000$ cycles
- Rigid paddles from stainless steel to withstand pressure surges and high medium temperatures

Pressure Switch

SPECIAL FEATURES

- Adjustable on site
- Protection cap for switch point adjustment
- Setting ranges:
 - 0.4 ... +7 to 6 ... 30 bar
 - 6 ...100 to 85 ... 425 psi
 - 0.04 ... +0.7 to 0.6 ... 3 MPa
- Electrical rating up to AC 230 V, 50/60 Hz, 10 A





Forged Brass Ball Valve

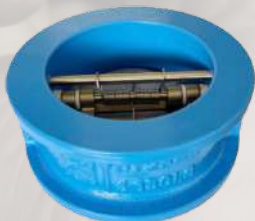
- High-quality forged brass
- PN32 Pressure rating
- Two piece design, lever operated
- Full port for maximum flow
- Screwed end for easy installation
- Long-lasting performance with excellent corrosion resistance
- ADC12 handle for enhanced corrosion resistance and mechanical properties

Butterfly Valve

FAHM's wafer-type butterfly valves are designed to deliver reliable performance across various applications. With robust construction using ductile Iron (DI) for both the body and disc, these valves are epoxy-coated to withstand harsh conditions, ensuring durability and long-lasting service.



Dual plate Check Valve



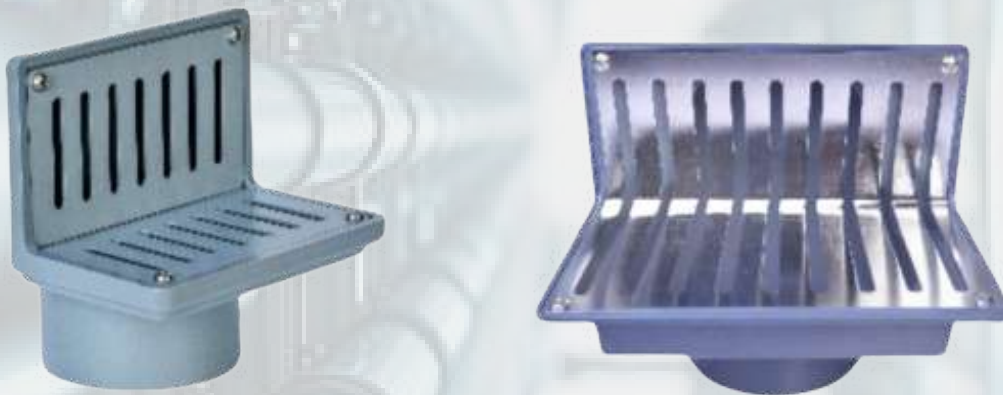
- Lightweight design for easier handling and self-supporting operation
- Compact size allows for horizontal or vertical installation, offering versatility in application
- Versatile seat options: choose between soft seats and Metal-Metal
- Disc, coupled with springs, ensures an airtight seal for enhanced performance
- Responsive springs facilitate swift closure
- Shaft design, prevents vibration, maintaining stability
- Hermetic sealing achieved through a shaft and stop pin mounted on support, rather than through body holes



Corner Drains



Scupper / Khurra drains - Balcony



Scupper / Khurra drains - Terrace





29
Clients

Industries We Serve



Energy



Construction



Education



Food



Finance



Production



Healthcare



Real Estate



Infrastructure



Retail



Telecom



Manufacturing



IT

Our Clients & Projects







CASCADE ENGINEERS INDIA

#44, 3rd cross Someshwaranagar,
1st block Jayanagar,
Bangalore 560011

+91 9448061552 | 080 26561552
hussain.cascadeengineersindia@gmail.com
www.cascadeengineers.com